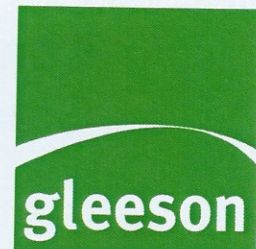


Opportunity For New Houses

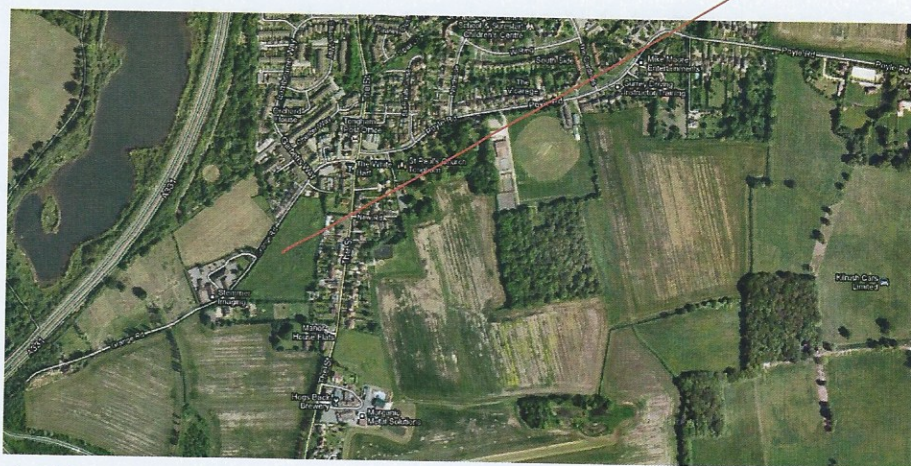
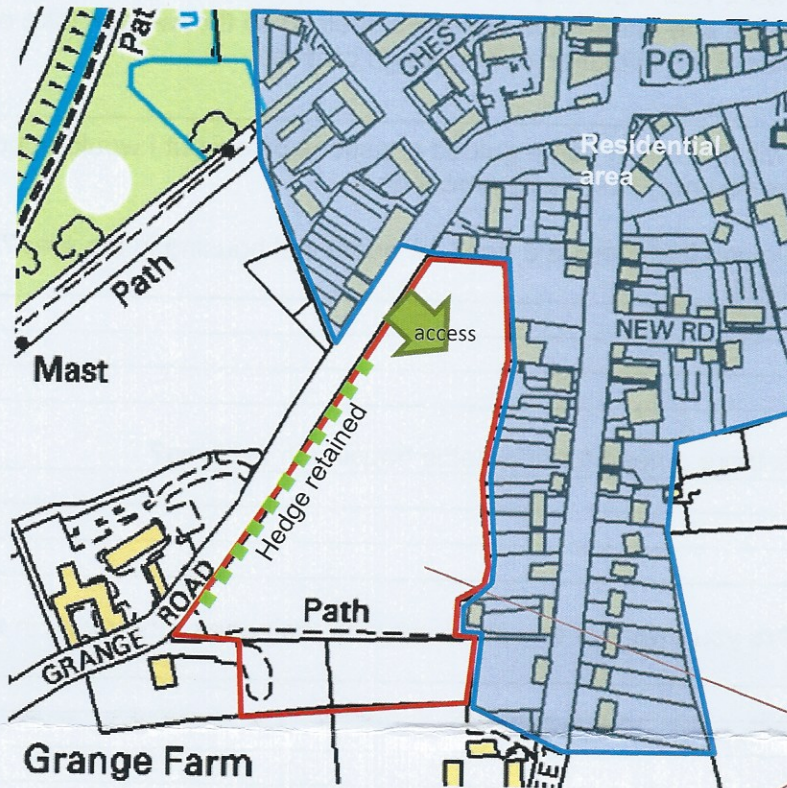
Elements to consider

- Number of open market houses
- Affordable houses
- Landscaped gardens and setting
- Protection of boundary hedges
- Drainage design incorporated into scheme
- Highway analysis undertaken to ensure safe access.
- Improvements to the area

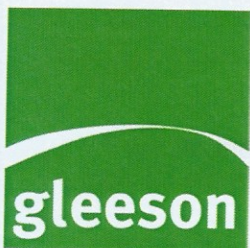
Residential Development at Grange Road, Tongham



Development Area



About Gleeson



Gleeson Developments Limited is a division of the MJ Gleeson Group, which was founded in Sheffield in 1903. We have an enviable track record of promoting land through the development plan system to delivery. We have successfully promoted many sites through the planning process and delivered many major projects throughout the country and I would draw your attention to the projects listed on our website at www.gleesonstrategicland.co.uk to provide you with an overview of other projects we have been involved in.

Please send your comments to Mark Jackson, Sentinel House, Harvest Crescent, Ancells Business Park, Fleet, GU51 2UZ or email mjackson@mjgleeson.com by 18th March 2013.

Consultation on Housing Proposal, Grange Road, Tongham



We want your input into the emerging proposals. Please take some time to comment on the proposal and answer the questions (below) so that we can take on board your comments as part of the evolution of the design process.

You will find below some guided questions below but I would appreciate your comments on any issues you may wish to comment on.

Q1 Do you feel there is a need for additional housing in the area? If so what type of housing is needed?

Q2 Is there a need for affordable housing in the area?

Q3 Are you aware of any problems with drainage or the roads in the area?

Q4 Is there sufficient children's play space in the area?

Q5 Is there anything you would want to see provided in the area associated with a proposal for housing?

Q6 Any other comments?

Name:

Address:

We want your input into the emerging proposals. Please take some time to comment on the proposal and answer the questions so that we can take on board your comments in the design process.

Please post your comments back to us at Gleeson, Sentinel House, Harvest Crescent, Ancells Business Park, Fleet, GU51 2UZ or if you would like to talk the proposals through with someone please call Mark Jackson on 01252 360353.